

Allianz Global Corporate & Specialty

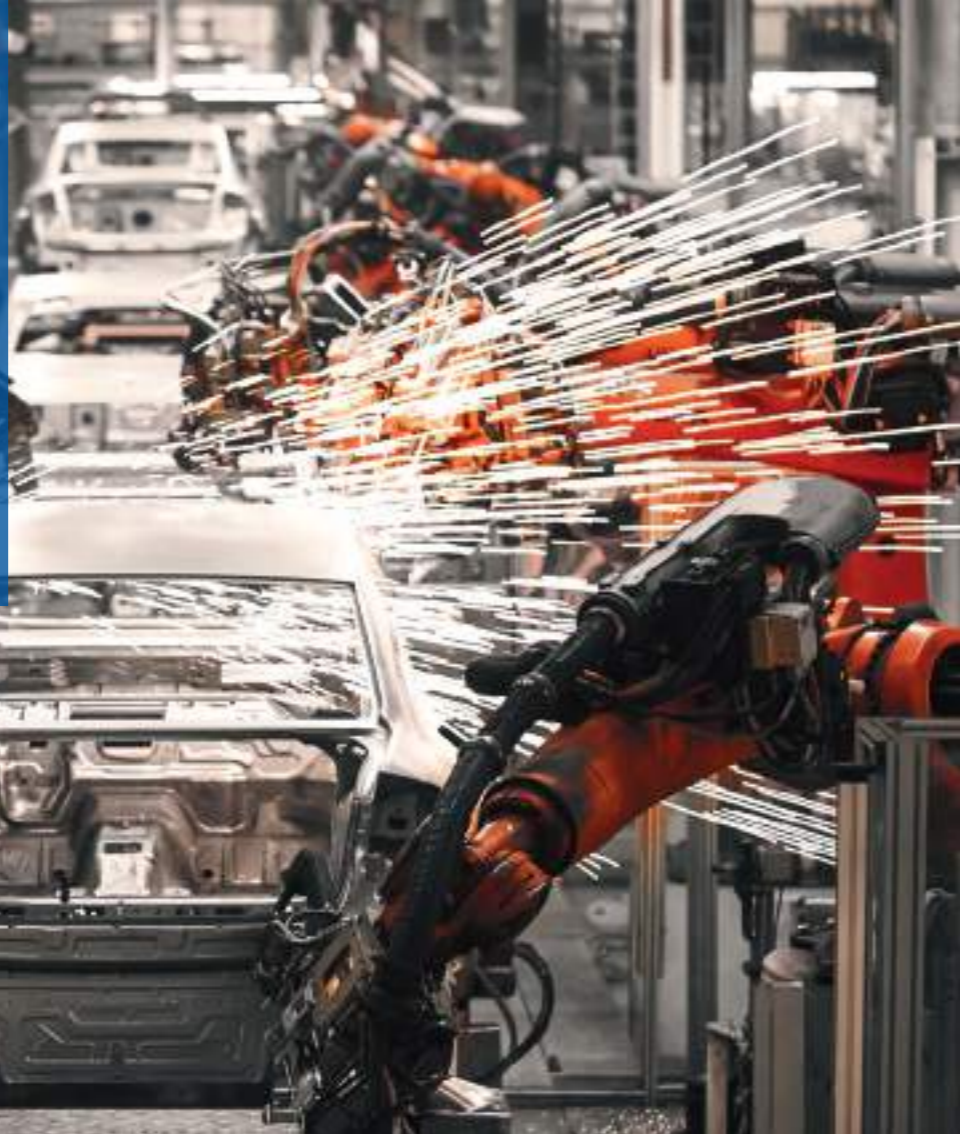
Global Risk Consulting

Tailored worldwide risk management services from Allianz Risk Consulting

Allianz 

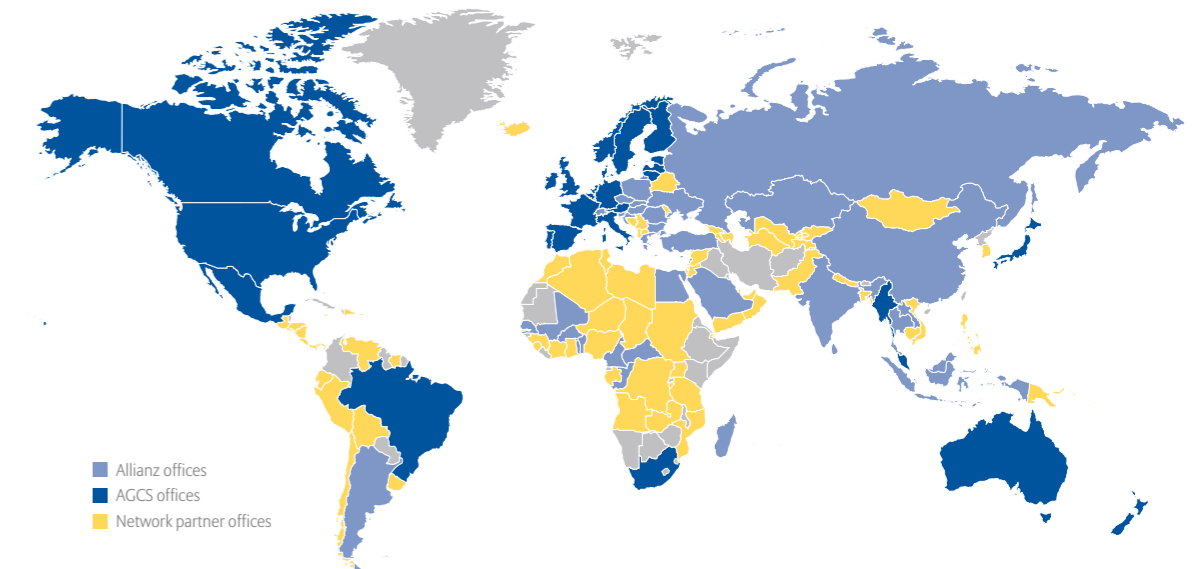
What we do?

Allianz Risk Consulting (ARC) applies a consultative approach to find the best solutions for preventing or reducing potential losses. Loss control programs are agreed and based on client risks and needs, and are managed by a dedicated account engineer who serves as the client's single point of contact. The account engineer is the technical liaison between client, broker and our underwriters, and is responsible for coordinating a program of site surveys and projects.

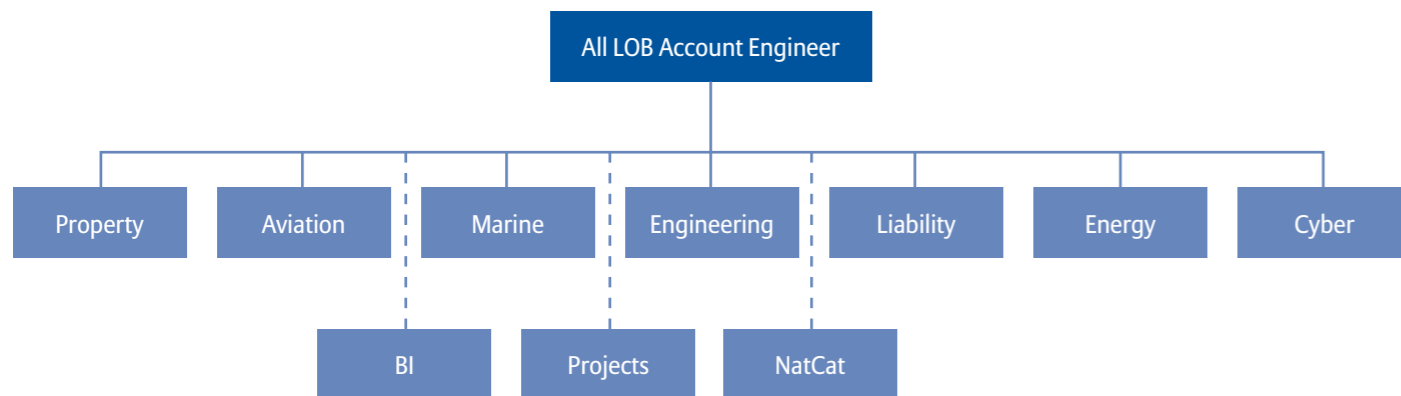


ARC offers a comprehensive risk engineering service including

- Dedicated Account Engineer
- Access to ARC network
- Plan & project reviews
- Industry expertise
- A mix of analyses based on programme demands
- Technical training
- Knowledge transfer
- Loss investigation studies
- Emerging risk analysis, such as ESG, Cyber & Supply Chain
- Allianz Centre for Technology



A single point of contact to access a wealth of technical expertise



Why Allianz Risk Consulting?

- **Global Network** - We are a global network of over 300 engineers
- **Flexibility of Approach** - We are a truly consultative engineering service, offering innovative solutions to our clients often complex problems
- **Flexibility of Codes** - Engineering programmes delivered to NFPA codes, local codes or clients individual - loss prevention standards
- **Sector Expertise** - Vast global experience in numerous industries built up over many years
- **Successful Transition** - Many examples of successful clients transitions to ARC from other insurers and loss control providers
- **Strategic advice & solutions** - ARC play a proactive client partnership role in focusing the programme and working with stakeholders to share knowledge and experience to all parties' mutual benefit
- **Long term relationship** - ARC desire a long term relationship built on mutual trust and support. We have many examples of successful partnerships with our clients embedded over many years. References are available where required
- **Risk management services** - A variety of risk management services are available to be tailored to suit client requirements
- **Quality and Consistency** - Property engineers are Allianz certified and comply with company practices and procedures
- **Mixed Programmes** - Cross discipline loss control programmes with single point of contact



What do our new clients think of Allianz?

“As the Director of Global Risk Management for a leading American company which manufactures automotive original equipment and aftermarket services products for major vehicle brands, I recently appointed Allianz London as our global property insurance company. Our program includes Allianz risk engineering services. As a company that operates a Captive, has well over 100 manufacturing Sites, 35 plus distribution centers and 27 technical centers globally, we not only require a reliable property insurer with global reach, but also one that can provide robust and comprehensive risk engineering loss control services to assist in the identification, control and mitigation of our insurable risks.

In the first year Allianz was an our program, they undertook over 50 engineering loss prevention surveys around the globe, delivered quarterly progress reports, a renewal strategy report, and a Property and Business Interruption Risk Overview report, identifying and summarizing critical locations, interdependencies and key supply chain risks. We very much value the Allianz underwriting and engineering teams flexible and collaborative approach in lieu of a more traditional and prescriptive approach, to risk management. Allianz have taken the time to understand our business through an entrepreneurial approach to the relationship. Our confidence in them as a partner allowed us to subsequently extend the relationship by adding additional lines of coverage.”

What do our mature clients think of Allianz?

“As Head of Group Risk & Insurance for a leading European company working in the defence sector, I confirm that we have worked with Allianz Global Corporate & Specialty (AGCS) in London, who have lead our Property Damage and Business Interruption Insurance since 2005. During this time we have supported by Allianz Risk Consulting (ARC) through London and supported locally in France, Italy, Germany and other countries worldwide for the provision of risk engineering review, support and advice. We consider our relationship with ARC as a true partnership and the advice and support given has enabled us to significantly improve the risk quality of the company. With the complex nature of our business and in order to assist us in the control and mitigation of our risks and to minimise the exposure of our captive, we highly value ARC’s comprehensive risk engineering loss control services and consider that the excellent support we have received has been a key differentiator for AGCS.

Each year ARC undertakes loss prevention surveys at our facilities and they work with us to improve our risk control standards. We have also made extensive use of then consulting services or projects and ad-hoc requests for support including new build factories, new activities and processes and the development of bespoke in-house risk management standards for hazard protection. They deliver an annual status report to us and fully cooperate with the co-insurer panel including the provision of an independent assessment of work undertaken and the risk status of the business.

We very much value ARC’s flexible approach to risk management, and a willingness to consider alternative options, rather than a single prescriptive approach. Allianz have taken the time to understand our business and we value their contribution to our corporate risk management efforts and the consequential improvement of our overall risk quality.”

Managing a cross line risk management programme

An experienced Account Engineer acts as an extension of your management team and is responsible for the transition quality and timely delivery of your loss control programme in compliance with the agreed **Account Servicing Instructions** drawn up for the benefit of all parties. The Engineering Team is managed on a matrix basis around the World and each region supports the Account Engineer and client requirement.

The Account Engineer acts as the primary point of contact for all risk engineering activity, and will:

- Access expertise in the ARC network
- Agree service criteria with our client at stewardship meetings
- Assign & control workload distribution
- Undertake quality review
- Ensure timely delivery to agreed output standards
- Deliver an account overview summary on programme findings
- Be available for consultation



Marine

- Provide technical expertise and proactive risk management solutions across a wide range of intermodal Cargo, Hull and fixed locations
- Logistics and supply-chain security specialists
- Project cargo- Consulting, surveying, Tug & tow approvals
- Risk assessment (Risk grading) for Hull, Cargo and fixed locations
- Seaport Terminals Property and Liability Risk Assessments
- Vessel surveys & Office Audits
- Warehouse inspections
- Packaging – Advice, approval, design
- Cargo damage surveys and investigations



Liability

- Environmental liability
- Products liability and recall
- Pharmaceuticals and clinical trials
- Information and Communication Technologies (ICT)
- Facility management
- Product tampering
- Construction
- Employer's liability



Power & Utilities

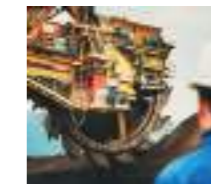
- Operational Power Plants (MB/BI)
- Power Plant Projects (EAR/DSU/ALOP)
- Thermal Plants, wind (onshore & offshore), Solar, EFW, Hydro, Geothermal, Nuclear
- Expertise in turbomachinery, steam generation & electrical equipment



Engineering Construction

Construction and Erection All Risks (CAR and EAR)

- Airports
- Bridges
- Commercial and Residential buildings
- Highrise buildings
- Motorways
- Ports and Harbours
- Power Plants
- Railway
- Tunnels



Mining

- Operational Cover (MB / BI)
- Projects (EAR / DSU)
- Surface mining & processing (crushing, milling, concentration and refining)



Cyber

Cyber risk dialogue

- In-depth Cyber risk dialogue by one to one discussion with various stakeholders form IT, information Security, data privacy, risk management at client headquarters.
- Cyber risks identification for high risk business units and the data privacy aspect.

Cyber BI and CBI

- Client specific Cyber business interruption and Contingent business interruption risk assessment
- Potential cyber business interruption loss estimates by collaborating with client.

Cyber Flex

- On-site survey to evaluate the cyber risks and identify risk reduction measures triggered by cyber business interruption.
- Identify each major production/ manufacturing plant function, process chain, major control system and cyber assets.



Property

ARC Property offers our clients comprehensive risk engineering and the key services include:

- Site surveys for property, business interruption and construction
- Reviews of loss control management programs
- Business Interruption analysis
- Business Continuity Management
- Technical training and knowledge transfer
- Plan & project reviews
- Testing & commissioning of fire protection systems
- Fire protection impairment management
- Loss investigation surveys



Energy

Offshore Areas of Expertise

- Oil and gas exploration and production
- Pipelines
- Terminals
- Tank farms
- Refineries
- Gas plants
- Petrochemical operations
- Chemical risks with vapor cloud exposure

Offshore Areas of Expertise

- Platforms and pipelines
- Drilling and control of well
- Drill ships, FPSOs and other support vessels
- Shipyards and offshore equipment construction sites



AZT

The AZT is a center of excellence for in-depth loss investigations on current and new technologies, and is a significant contributor to client risk reduction. Its expert services have helped shape the way we do business and have added a value for our clients that goes beyond numbers. When working with ART and the AZT, you get 80 years of damage analysis and prevention engineering in your corner. There is simply no better way to prepare for the unexpected.

Registered Office:

Allianz House
60 Gracechurch Street
London
EC3V 0HR

www.agcs.allianz.com